



Lifting platforms & pallet trucks

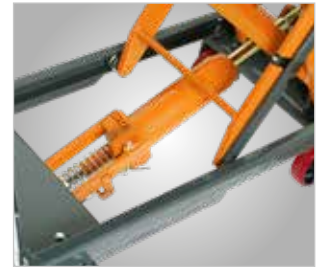
# Hydraulic scissor lift

## FHT – Mobile scissor lift platform with 500 kg load-bearing capacity

- ▶ Robust steel design
- ▶ For flexible and comfortable working
- ▶ With an easy-to-operate foot pedal for raising the table hydraulically to the desired height
- ▶ Separate foot pedal for lowering the table
- ▶ Robust rollers with safety wheel guard and brakes on the two steering rollers for enhanced safety during loading and unloading
- ▶ The relief valve protects the operator and the pump



▶ Easy-to-operate hydraulic foot pedal



▶ Hydraulic lifting and lowering device

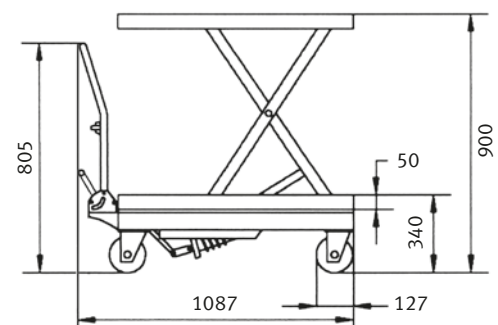


▶ Robust rollers with safety wheel guard and brakes on the two steering rollers for enhanced safety during loading and unloading



▶ Easy and conveniently operable table lowering

<b>Model</b>	<b>FHT 500</b>
Art. no.	6150500
<b>Technical specifications</b>	
Load-carrying capacity	0.5 t
Platform dimensions	855 x 500 x 50 mm
Total length	1087 mm
Lifting range	340 - 900 mm
Grip height	805 mm
Stroke per pump action	13 mm
Roller Ø	127 mm
Weight	87 kg



## SHT series – Hydraulic compact scissor lift platform

- ▶ For ergonomic working at an optimum working height
- ▶ With closed platform
- ▶ Separate control unit with 3-metre cable, control buttons and emergency stop switch
- ▶ Infinitely variable lifting and lowering
- ▶ Stable, powder-coated steel design
- ▶ Guaranteed stability
- ▶ Circumferential safety rails
- ▶ Fulfils the safety criteria of EN 1570
- ▶ High-pressure cylinder with dual-safety function

Model	SHT 1000	SHT 2000
Art. no.	6154100	6154200
<b>Technical specifications</b>		
Load-carrying capacity	1 t	2 t
Platform dimensions	1 300 x 800 mm	1 300 x 800 mm
Lifting time	25 s	40 s
Lifting speed loaded	40 mm/s	22 mm/s
Services	0.75 kW	0.75 kW
Lifting range	190 - 1 010 mm	190 - 1 010 mm
Weight	220 kg	280 kg



## SHT G & U series - Compact-height lifting tables

### SHT 1001 U model with U-shaped platform

- ▶ For ergonomic working at an optimum working height
- ▶ With closed platform
- ▶ SHT 1001 G including loading ramp - for easy moving in and out with pallet truck
- ▶ Separate control unit with 3-metre cable, control buttons and emergency stop switch
- ▶ Infinitely variable lifting and lowering
- ▶ Robust steel design for optimum stability
- ▶ Fulfils the safety criteria of EN 1570
- ▶ Chrome-plated piston rods
- ▶ SHT 1001 U model with U-shaped platform ensures easy access with pallet lifting truck

Model	SHT 1001 G	SHT 1001 U
Art. no.	6153100	6153101
<b>Technical specifications</b>		
Load-carrying capacity	1 t	1 t
External dimensions of platform	1 450 x 1 140 mm	1 450 x 1 140 mm
Internal dimensions of platform	-	1 050 x 585 mm
Lifting time	18 s	18 s
Lifting speed loaded	42 mm/s	42 mm/s
Services	0.75 kW	0.75 kW
Electrical connection	400 V / 3 Ph/ 50 Hz	400 V / 3 Ph/ 50 Hz
Current type	AC	AC
Lifting range	82 - 760 mm	80 - 760 mm
Weight	250 kg	235 kg



SHT 1001 G



SHT 1001 U

# Professional pallet truck

**PHW Series** – Professional pallet truck in stable, robust quality for demanding daily use – also available with short and long forks

- ▶ Robust fully-hydraulic lifting and lowering device
- ▶ Smooth-action hydraulic pump with hard chrome-plated piston and pressure relief valve
- ▶ Lowering speed infinitely variable thanks to release valve with granular control
- ▶ Highly stable, torsion-resistant monocoque design of frame and forks
- ▶ Ergonomically shaped drawbar, non-slip with additional plastic coating
- ▶ Three functions operable via one-hand lever (lifting, lowering, neutral position)
- ▶ Easy to move even heavy loads thanks to super quiet aluminium steering rollers with solid rubber tyres and tandem fork rollers made of polyurethane
- ▶ Precision ball bearings in all wheels and rollers



**New**

**New**

Model		PHW 2506 K	PHW 2506	PHW 2506 L
Art. no.		6152507	6152506	6152508
<b>Technische Daten</b>				
Load-carrying capacity	t		2,5	
Load bearing width	mm		540	
Fork width	mm		160	
Fork length	mm	800	1 150	1 800
Lifting range	mm		85 – 200	
Steering angle	°	186	210	186
Turning radius	mm	835	1275	1790
Steering rollers (Ø x width)	mm		200 x 50	
Fork rollers (Ø x width)	mm		80 x 70	
Length	mm	1 190	1 540	2 190
Width	mm		540	
Height	mm	1 240	1 230	1 240
Weight	kg	63	69	107

**Model PHW 2505 K**

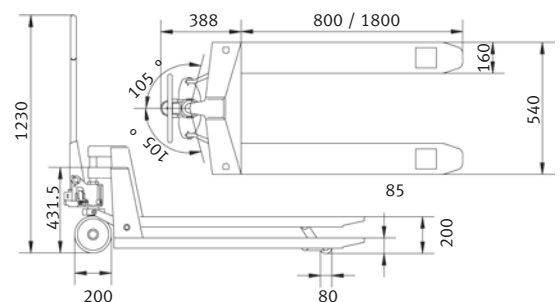
▶ Short fork type (800 mm)

**Model PHW 2505 L**

▶ Long fork type (1 800 mm)



	Short forks	Long forks
<b>Model</b>	<b>PHW 2505 K</b>	<b>PHW 2505 L</b>
Art. no.	6150256	6150257
<b>Technical specifications</b>		
Load-carrying capacity	2.5 t	2 t
Load bearing width	540 mm	540 mm
Fork width	160 mm	160 mm
Fork length	800 mm	1 800 mm
Lifting range	85 - 200 mm	85 - 200 mm
Steering angle	210°	210°
Turning radius	925 mm	1 925 mm
Steering rollers (Ø x width)	200 x 50 mm	200 x 50 mm
Fork rollers (Ø x width)	80 x 70 mm	80 x 70 mm
Dimensions	1 195 x 540 x 1 230 mm	2 195 x 540 x 1 230 mm
Weight	71 kg	122 kg



# Pallet truck with weighing device and printer

## PHW W / WP series

### PHW 2000 W



- ▶ Self-explanatory large 4-button control panel with tactile click
- ▶ Also very easy to operate when wearing gloves
- ▶ Weight display in 1 kg steps

### PHW 2000 WP



- ▶ PHW 2000 WP including integrated printer for weight output

**PHW W / WP series** – Professional pallet truck with 2 t load-bearing capacity and integrated electronic weighing device. “WP” version additionally with integrated printer

- ▶ Aluminium steering rollers with full-rubber tread, PU tandem fork rollers, precision ball bearings
- ▶ Integrated electronic scales protected by steel housing
- ▶ With a large, six-digit LCD display for pounds or kilograms and grams, also easily readable from the side
- ▶ With error message display
- ▶ Electronic parts for reliability, DIN IP65-protected against humidity and dust
- ▶ Reliable at temperatures from -10° to 40° C and 10 % to 95 % relative humidity
- ▶ Tare correction, gross/net weight, total weight and totalling function for serial weighing
- ▶ Power supply via 4 AA 1.5V batteries

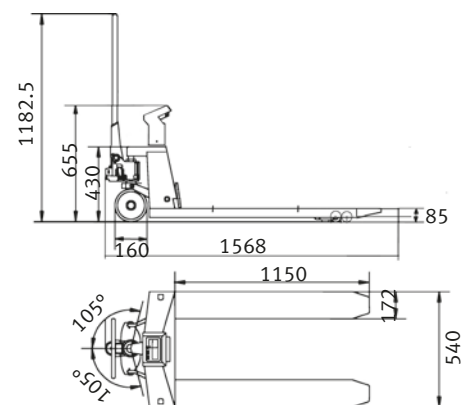


PHW 2000 W

PHW 2000 WP

- ▶ Additionally with integrated printer

Model	PHW 2000 W	PHW 2000 WP
Art. no.	6150261	6150271
<b>Technical specifications</b>		
Load-carrying capacity	2 t	2 t
Load bearing width	540 mm	540 mm
Fork width	172 mm	172 mm
Fork length	1 150 mm	1 150 mm
Lifting range	85 - 175 mm	85 - 175 mm
Steering angle	210 °	210 °
Turning radius	1 362 mm	1 362 mm
Steering rollers (Ø x width)	160 x 50 mm	160 x 50 mm
Fork rollers (Ø x width)	70 x 60 mm	70 x 60 mm
Dimensions (L x W x H)	1 568 x 540 x 1 182.5 mm	1 568 x 540 x 1 182.5 mm
Weight	135 kg	135 kg
<b>Weighing device</b>		
Weighing capacity	2 000 kg	2 000 kg
Measuring interval	1 kg	1 kg
Measuring accuracy	at 2 000 kg = +/- 2 kg	at 2 000 kg = +/- 2 kg
Battery voltage*	4 x 1.5 V	4 x 1.5 V



PHW 2000 W, PHW 2000 WP

\* Battery included in scope of delivery



- ▶ The lift, quick lift, and lower functions, and neutral position are set via the one-hand lever
- ▶ Optimum comfort due to plastic coating



- ▶ Fully-hydraulic lifting and lowering device with hard chrome-plated 3-part piston and pressure relief valve
- ▶ The lowering speed is automatically reduced for heavy loads
- ▶ Fast mechanical lifting stroke to reach maximum fork height



- ▶ During pumping, the lifting truck is supported by its factory-standard support feet as of a certain height. This ensures stability and stops the lifting truck rolling away



- ▶ The PHH 1001 is universally deployable thanks to its low chassis height of just 430 mm

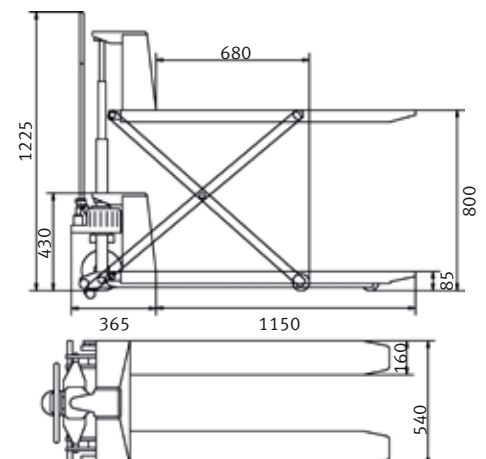
## PHH 1001 - Combined scissor pallet truck

The mobile lifting platform with a load-bearing capacity of 1 t

- ▶ Robust fully-hydraulic lifting and lowering device
- ▶ Smooth-action hydraulic pump with hard chrome-plated piston and pressure relief valve
- ▶ Lowering speed infinitely variable thanks to release valve with granular control
- ▶ Quickly reaches the max. fork height thanks to mechanical fast stroke
- ▶ Stable, torsion-resistant monocoque design of frame and forks
- ▶ Easily manoeuvrable thanks to steering angle of up to 210°
- ▶ Ergonomically shaped drawbar, with additional plastic coating
- ▶ Move heavy loads easily by switching from pumping to neutral position
- ▶ Extremely quiet action thanks to aluminium steering rollers with full-rubber treads
- ▶ Plastic load rollers
- ▶ Maintenance-free precision ball bearings in all wheels and rollers



Model	PHH 1001
Art. no.	6150100
<b>Technical specifications</b>	
Load-carrying capacity	1 t
Load bearing width	540 mm
Fork width	160 mm
Fork length	1 150 mm
Lifting range	85 - 800 mm
Chassis height	430 mm
Steering angle	210°
Steering rollers (Ø x width)	180 x 50 mm
Fork rollers (Ø x width)	74 x 50 mm
Dimensions (L x W x H)	1 515 x 540 x 1225 mm
Weight	122 kg



# Scissor pallet trucks

## PHH 1003 E - Combined scissor pallet truck with electrohydraulic lifting device and 1 t load-bearing capacity

- ▶ Robust electro-hydraulic lifting and lowering device
- ▶ Hydraulic pump with hard chrome-plated piston and pressure relief valve
- ▶ Dual use as electric or manually-driven scissor pallet truck, e.g., while charging the battery
- ▶ Manual lowering; smooth, continuous lowering speed adjustment thanks to release valve with granular control
- ▶ Stable, torsion-resistant monocoque design of frame and forks
- ▶ Ergonomically shaped drawbar, with additional plastic coating
- ▶ Extremely quiet action thanks to aluminium steering rollers and fork rollers with polyurethane covered full rubber tread
- ▶ Maintenance-free precision ball bearings in all wheels and rollers
- ▶ Maintenance-free battery with an operating time of five hours (12 V/60 Ah) as standard
- ▶ Battery can be charged via any 230-V socket



- ▶ The ergonomically shaped drawbar supports single-handed operation and is also plastic-coated for optimum convenience



- ▶ Robust electro-hydraulic lifting and lowering device
- ▶ The lowering speed is automatically reduced for heavy loads to avoid damage
- ▶ LED battery charge display



- ▶ Premium, smooth-action hydraulic pump with hard chrome-plated piston and pressure relief valve

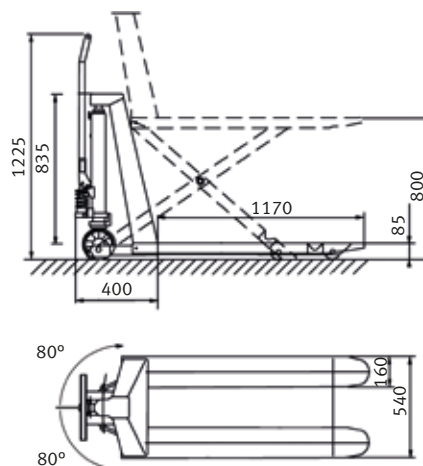


- ▶ During pumping, the lifting truck is supported by its factory-standard support feet as of a certain height. This ensures stability and stops the lifting truck rolling away



**Info & video**

Model	PHH 1003 E
Art. no.	6150104
<b>Technical specifications</b>	
Load-carrying capacity	1 t
Load bearing width	540 mm
Fork width	160 mm
Fork length	1 170 mm
Lifting range	85 - 800 mm
Steering angle	160 °
Turning radius	1 564 mm
Steering rollers (Ø x width)	180 x 55 mm
Fork rollers (Ø x width)	75 x 50 mm
Dimensions (L x W x H)	1 715 x 540 x 1 254 mm
Weight	152 kg
<b>Electrical data</b>	
Lift motor output	0.8 kW
Battery voltage	12 V
Battery rated capacity	60 Ah
Battery weight	24 kg





## GHHW 1000 – Perfect for loading and unloading vehicles

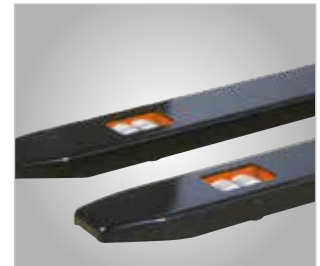
- ▶ Facilitates handling and transport in the warehouse and at the workplace
- ▶ Dual use for stacking and short transport tasks
- ▶ No sparks due to static charge and no electromagnetic fields; thus also suitable for flammable or explosive materials
- ▶ Robust steel section design with premium welds
- ▶ Fixed fork width for stable lifting of the load
- ▶ Economically designed lifting device with manually-actuated hydraulic pump
- ▶ Easily fits through doors and cramped warehouses thanks to its compact design
- ▶ Equipped with low-wear rollers and rotating, ball-bearing borne, nylon rear wheels for easy action
- ▶ Durably precision-engineered
- ▶ The lifting function is easy to use thanks to foot and hand levers



➔ Info & video



▶ Foot pedal takes the hard work out of lifting



- ▶ Rugged design with large steering rollers and twin polyurethane load-bearing rollers
- ▶ No sparks due to static charge and no electromagnetic fields; thus also suitable for flammable or explosive materials



- ▶ Ergonomically shaped handle for single-handed operation
- ▶ Optimum comfort due to plastic coating

Model	GHHW 1000
Art. no.	6151016
<b>Technical specifications</b>	
Load-carrying capacity	1 t
Load bearing width	550 mm
Fork width	170 mm
Fork length	1 150 mm
Lifting range	90 - 1 600 mm
Chassis height	1 980 mm
Steering angle	210 °
Steering rollers (Ø x width)	147 x 40 mm
Fork rollers (Ø x width)	83 x 60 mm
Lifting speed	25 mm/s
Lowering speed	Manually controllable
Turning radius	1380 mm
Aisle width needed	2 112 mm
Load distribution	600 mm
Dimensions (L x W x H)	1 705 x 755 x 1 980 mm
Weight	230 kg

